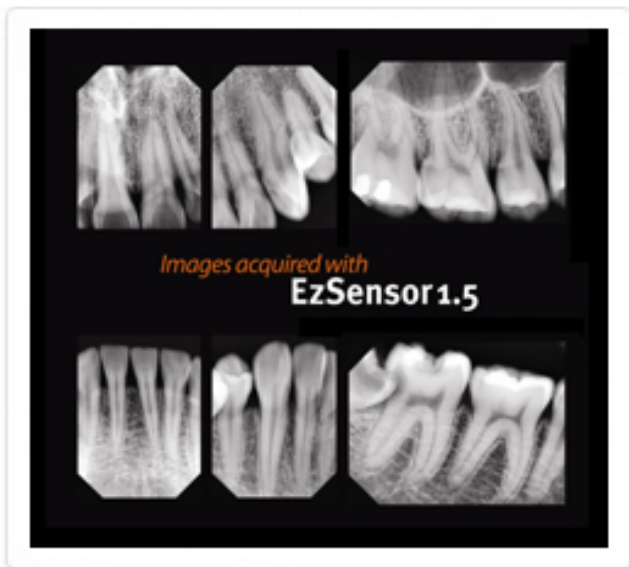
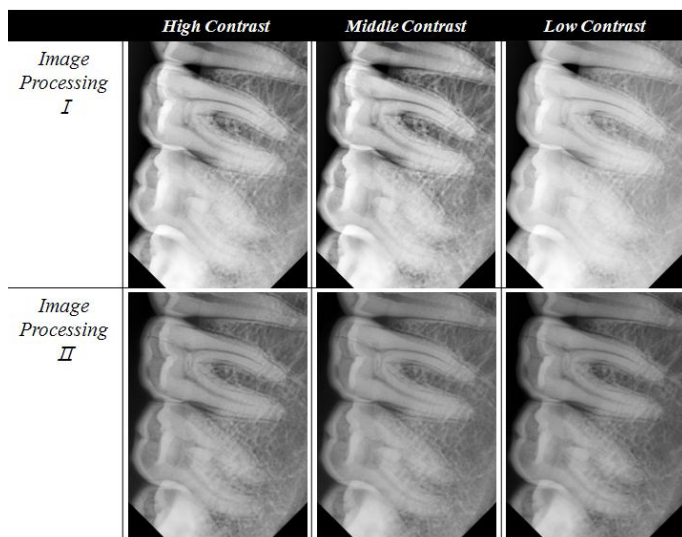




# EZ Sensor



**Detector Structure**

**Low Noise Hybrid CMOS**

**Dimension (W x L x T)**

**1.15 X 1.52 X 0.19 inch (29.2 X 38.7 X 4.9 mm)**

**Pixel Pitch**

**0.035 mm**

**Active Pixel Array**

**686 X 944 pixels (24.01 X 33.04 mm)**

**Dynamic Range**

**4096**

**Signal to Noise Ratio**

**>37dB**